

## Sistem Detayları

### System Details

Panelsan sistem detaylarını proje bazında ele alır, gerekli aksesuar ve finish malzemelerini bünyesindeki 30 tonluk hidrolik pres ve kalıp takımı, 80 ton 3 mm bükme kapasiteli CNC abkant pres ve hidrolik giyotin makastan oluşan metal işleme servisi ile karşılamaktadır. Panel birleşimlerinde ve sistem detaylarında kullanılan süngerler opsiyoneldir.

*Metal Process Service : PANELSAN's very own machinery park also includes a 30 tones of hydraulic press & casting set and 80 tones of CNC Abkant press & hydraulic guillotine with 3 mm bending capacity to produce project basis system details to provide required accessories and finishing materials.*

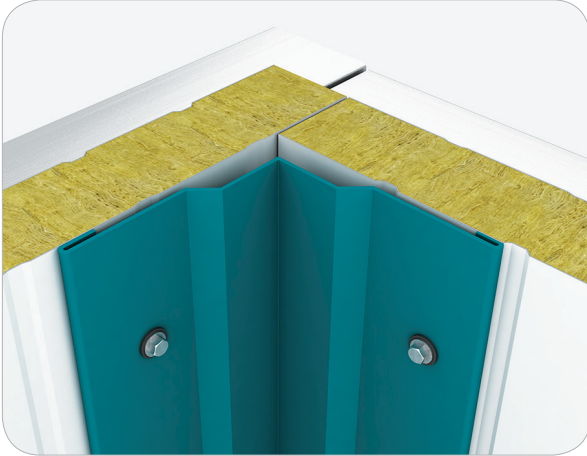
Damlalık Detayı / Drip Box Detail



Cephe Panel Ek Detay / Facade Panel Supplementary Detail



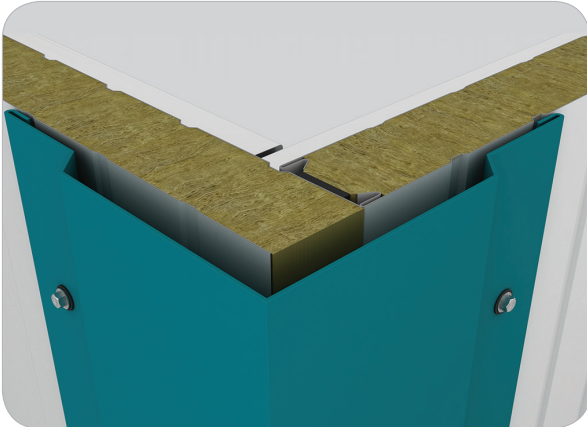
İç Köşe Detayı / Inner Corner Detail



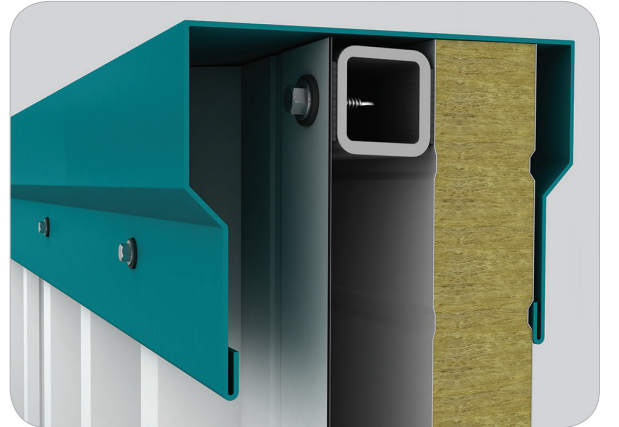
Omega Detay / Omega Detail



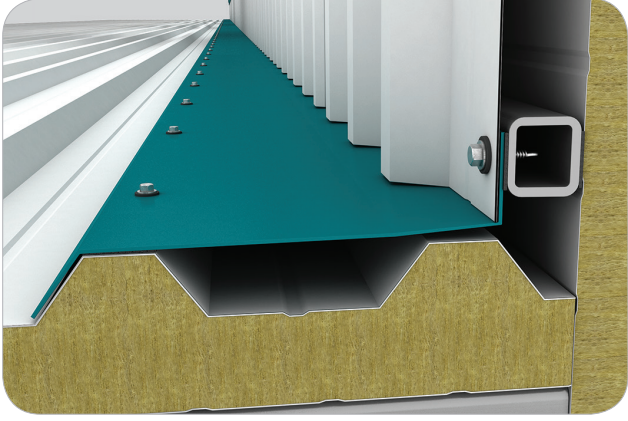
Dış Köşe Detayı / Outer Corner Detail



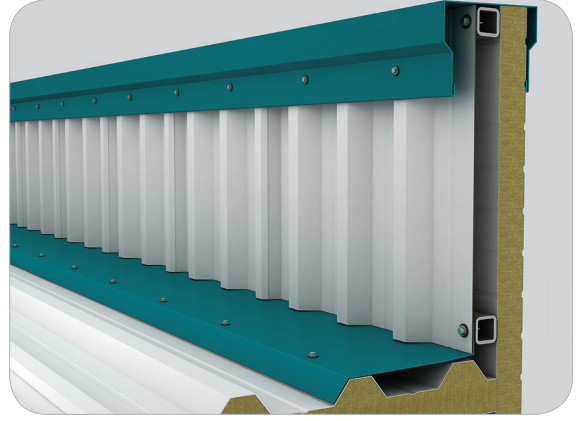
Harpuşta Detay / Protection Cap Detail



Kalkan Duvar Çatı Birleşimi-1 / Shield Roof-Wall Connection Detail-1



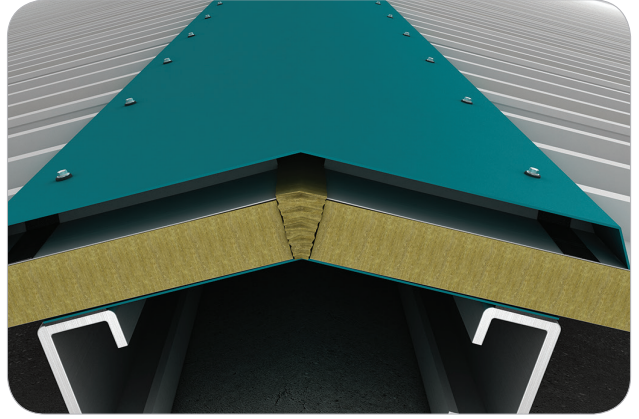
Kalkan Duvar Çatı Birleşimi-2 / Shield Roof-Wall Connection Detail-2



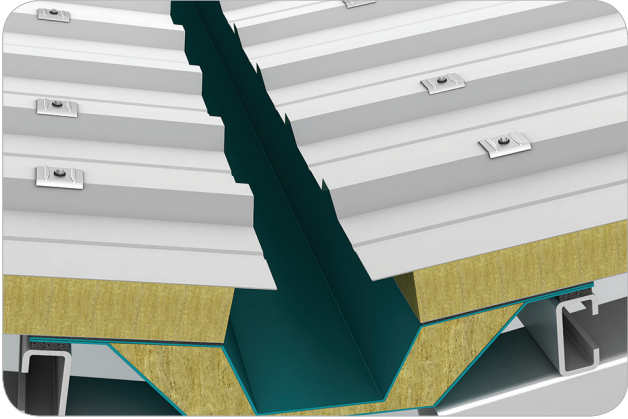
Yan Alın Detay / Side Front Covering Detail



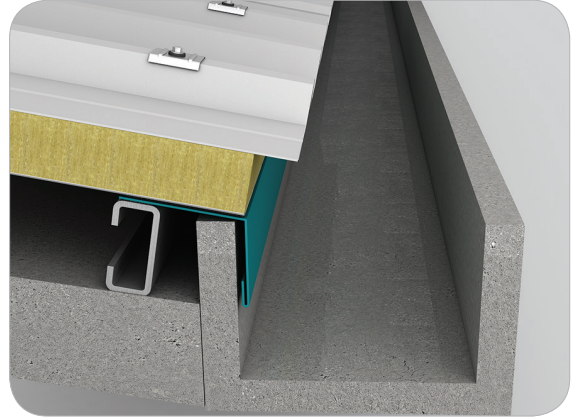
Mahya Detay / Ridge Detail



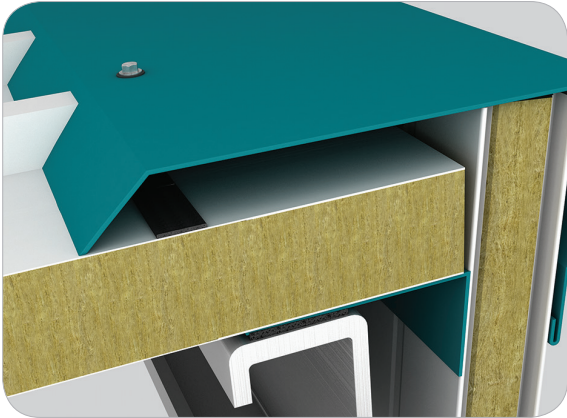
Oluk Detay / Gutter Detail



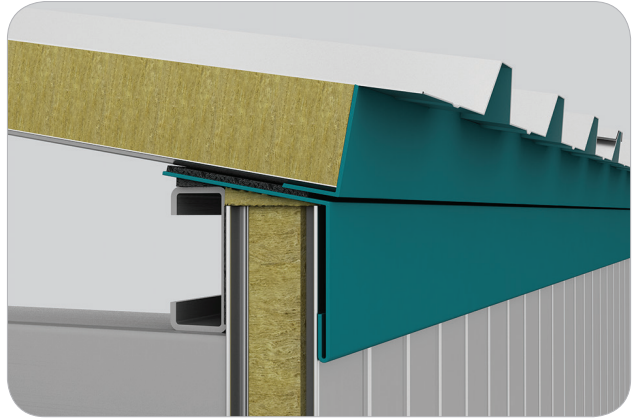
Oluk Betoneme Detay / Gutter Detail



Yarım Mahya Detayı / Semi Ridge Detail

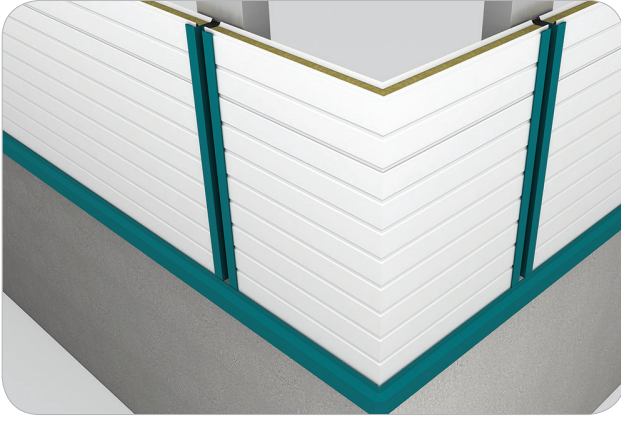


Ön Alın Kaplama Detayı / Front Covering Detail





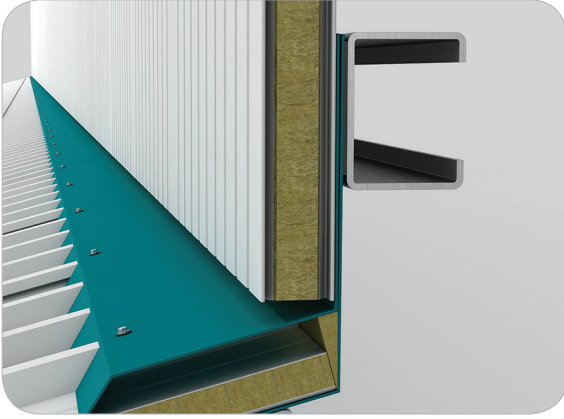
Köşe Panel Detayı / Corner Panel Detail



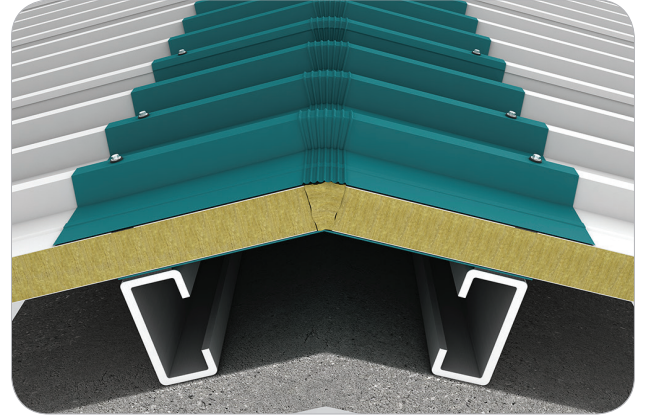
Yatay Panel Damlalık Detayı / Horizontal Panel Drip Box Detail



Duvar Çatı Birleşim Detayı / Wall-Roof Connection Detail



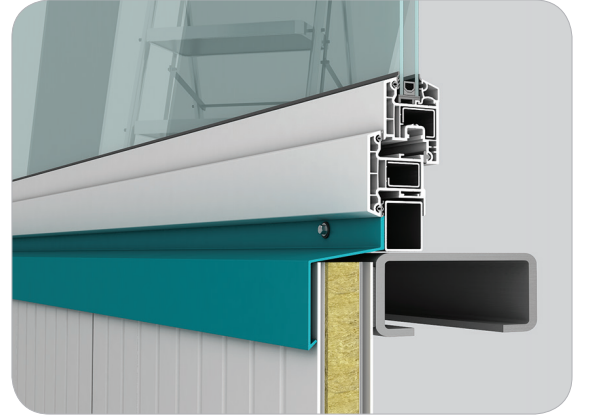
Trapez Mahya Detayı / Trapezoidal Ridge Detail



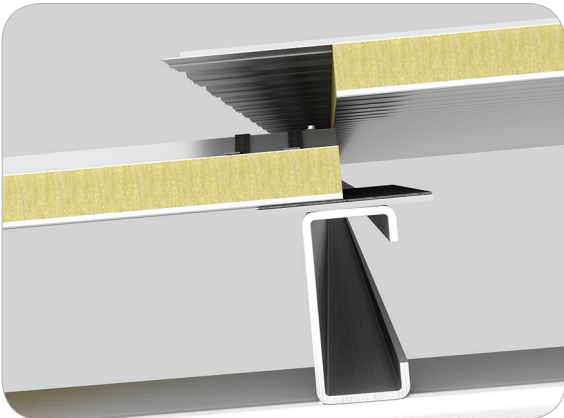
Pencere Üst Detayı / Window Upper Detail



Pencere Alt Detayı / Window Lower Detail



Panel Birleşim Detayı-1 / Panel Connection Detail-1



Panel Birleşim Detayı-2 / Panel Connection Detail-2

